

## Tafel 29

- B284 *Cucullia formosa* ROGENHOFER, 1860  
B284: leg., fot. DEUTSCH, IX 1987: I – Prov. Verona, Monte, 400 m.
- B285 *Cucullia scopariae* DORFMEISTER, 1853  
B285: LL-Larve, fot. BODI, leg., ex ovo BOBITS, ix. 1982: A – Wiener Neustadt.  
B285': VL-Larve, fot. BECK, leg., ex ovo BOBITS, ix. 1982: A – Wiener Neustadt.
- B285x *Cucullia fuchsiana* EVERS-MANN, 1842  
B285x: aus RONKAY & RONKAY (1994: plate 9, fig. 6), fot. L. RONKAY: Korea – vic Haeju.
- B286 *Cucullia chamomillae* ([DENIS & SCHIFFERMÜLLER], 1775)  
B286a: fl. *normalis*, leg., fot. STÜNING, ca. 1975: ohne Angaben.  
B286a': fl. *normalis*, leg. RUDOLPH, fot. BODI, 1990: E – Katal – vic Figueras.  
B286a'': fl. *normalis*, leg., fot. BODI, v. 1968: A – Bgld – Neusiedler See – Podersdorf.  
B286b: fl. *vaunigrum*, leg. RAUCH, fot. BODI, 1990: E – Katal – vic Figueras.
- B287 *Cucullia calendulae* TREITSCHKE, 1835
- B287a *Cucullia calendulae* fl. *normalis* (provis. Benennung)  
B287a: leg., ex ovo, fot. BECK, E iii.–v. 1975: GR – Delphi.  
B287a': leg., ex ovo, fot. BECK, E iii.–v. 1975: GR – Delphi.
- B287b *Cucullia calendulae* f. *hermiguae* PINKER & BACALLADO, 1979  
B287b: leg. AHOLA, fot. K. SILVONEN, ii. 1987: E – Canar. Inseln – Teneriffa – Santiago de Teide.  
B287b': leg. AHOLA, fot. (unterbelichtet) BECK, ii. 1987: E – Canar. Inseln – Teneriffa – Santiago de Teide.  
B287b'': leg., fot. BODI, 10. iv. 1982: E – Katal – Gerona – Vidreras – Puig Ventós.
- B288 *Cucullia santolinae* RAMBUR, 1834
- B288a *Cucullia santolinae* fl. *normalis* (provis. Benennung)  
B288a: leg., ex ovo BECK, fot. BODI E iii.–v. 1972: E – Alicante – Calpe.  
B288a': VVL-Stadium, leg., fot. BODI, iv. 1985: E – Katal – Gerona – Vidreras – Puig Ventós.
- B288b *Cucullia santolinae* fl. *viridis*  
B288b: Typus-Raupe!, leg. an *Artemisia* spec., fot. BODI, iv. v. 1986: E – Katal – Gerona – Vidreras – Puig Ventós.  
B288b': leg., fot. NIPPE, v. 1985: I – Elba – Insel Giglio.  
B288b'': leg., fot. NIPPE, v. 1985: I – Elba – Insel Giglio.



B284



B285



B285'



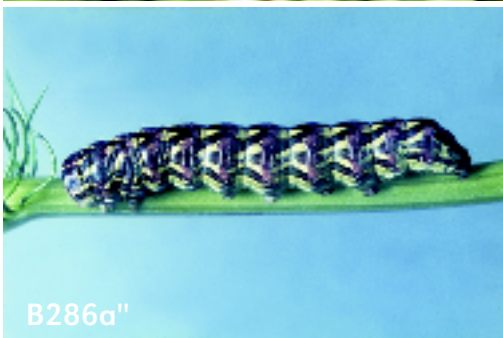
B285x



B286a



B286a'



B286a''



B286b



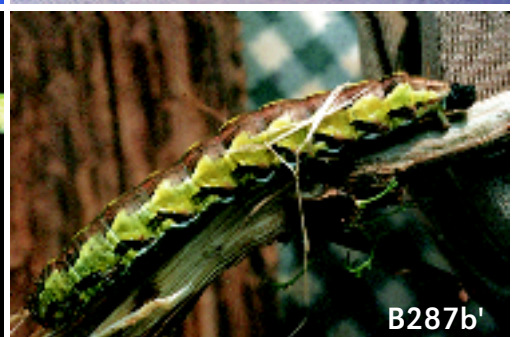
B287a



B287a'



B287b



B287b'



B287b''



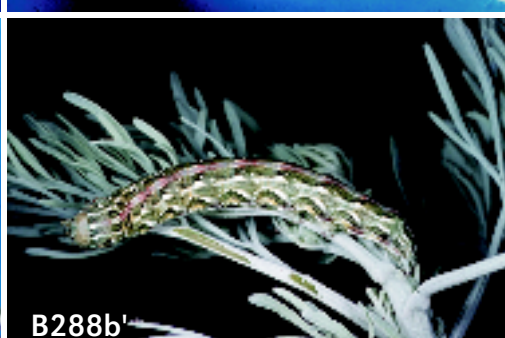
B288a



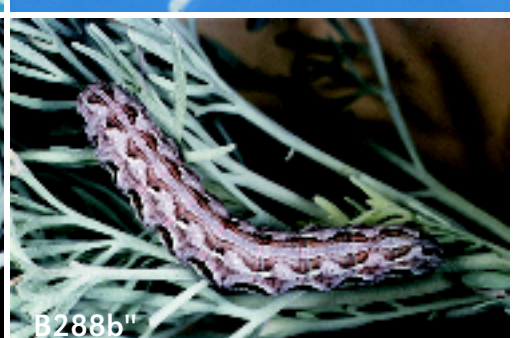
B288a'



B288b



B288b'



B288b''