

Tafel 33

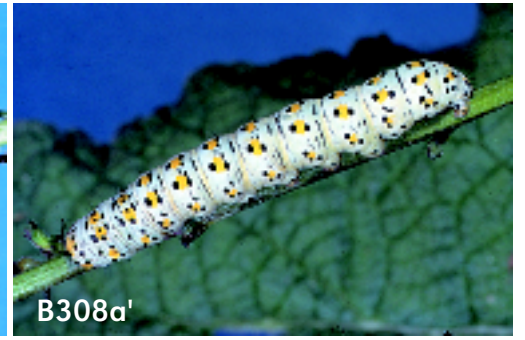
- B307 *Shargacucullia (Shargacucullia) blattariae* ssp. *scrophulariphaga* RAMBUR, 1833
B307': leg., fot. SCHNEIDER, E v. 1997: Korsika.
- B308 *Shargacucullia (?Shargacucullia) verbasci* (LINNAEUS, 1758)
- B308a, B308a' *Shargacucullia (?Shargacucullia) verbasci verbasci* fl. *normalis* (provis. Name)
B308a: „dunkle“ Form, leg., fot. BODI v. 1986: E – Katal – Gerona – Vidreras – Puig Ventós.
B308a': „helle“ Form; leg., fot. BODI v. 1986: E – Katal – Gerona – Vidreras – Puig Ventós.
- B308a", B308a" *Shargacucullia (?Shargacucullia) verbasci verbasci* fl. *transgressa* (vgl. auch B308c)
B308a": leg., fot. STÜNING, ?1975: E – Andal – Sra. Nevada – Benalmadena.
B308a"': leg., fot. SCHNEIDER, 30. v. 1997: Korsika – Corte (auf *Verbascum* spec.).
- B308b *Shargacucullia (?Shargacucullia) verbasci* ssp. *oberthueri* ROTHSCILD, 1911
B308b: leg. an *Scrophularia canina*, fot. BECK A iv. 1987: Marokko – Straße Fes – Azrou (ca. 20 km südl Fes).
- B308c *Shargacucullia (?Shargacucullia) verbasci* fl. *inexpectata* fl. *nov.*
B308c: leg., fot. SCHNEIDER, 20. vi. 1997: Korsika – Corte.
- B309 *Shargacucullia (Shargacucullia) lychnitis* RAMBUR, 1833
B309a: fl. *normalis* (provis. Name), leg. BLÄSIUS, fot. BECK, viii. 1975: A – Bgld – Neusiedler See – Donnerskirchen.
B309a': fl. *clara* fl. *nov.*, leg. BLÄSIUS, fot. BECK, viii. 1975: A – Bgld – Neusiedler See – Donnerskirchen.
B309b: f. *rivulorum* GUENÉE, 1852, leg., fot. BODI viii. 1981: E – Katal – Gerona – Vidreras – Puig Ventós.
- B309x *Shargacucullia (Shargacucullia) gozmanyi* RONKAY & RONKAY, 1994
B309x: Do-Ansicht, leg., fot. RONKAY: H – Vértes Mts. – Csákvár.
B309x': leg. GELBRECHT & SCHWABE an *Verbascum phoeniceum*, fot. BECK (alkoholkonserv. Raupe), viii. 1985: Bulg – Varna (Imago det. RONKAY).
- B310 *Shargacucullia scrophulariae* ([DENIS & SCHIFFERMÜLLER], 1775)
B310: leg., fot. BODI, vii. 1964: D – NS – Niendorf.
- B310x *Shargacucullia (Shargacucullia) ?osthelderi* BOURSIN, 1933
B310x: leg., fot. NIPPE, iv. 1984: S-Türkei – vic Antalya.
- B311 *Shargacucullia (Shargacucullia) scrophulariphila* STAUDINGER, 1859
- B311a *Shargacucullia (Shargacucullia) scrophulariphila scrophulariphila* STAUDINGER, 1859
B311a: fl. ?*velate* PETIT, leg., fot. BODI, ?vii. 1988: E – Katal – Montseny vic Barcelona – Aygua freda.
B311a': fl. *normalis*, „dunkle“ Form (oben), „helle“ Form (unten), leg., fot. GARCÍA-BARROS (aus YELA, 1992): E – Riopar – Albacete.
B311a"': fl. *nigromixta*, leg. an großblütiger *Scrophularia* spec., fot. BECK, A iv. 1986 (Eier und L1-Larven): E – Andal – vic Ronda.
- B311b *Shargacucullia (Shargacucullia) scrophulariphila* ssp. *mauretanica* BOURSIN, 1933
B311b: leg., fot. PETIT, ?1987: E – Andal – Sra. Nevada – vic Granada.



B307'



B308α



B308α'



B308α''



B308α'''



B308β



B308c



B309α



B309α'



B309b



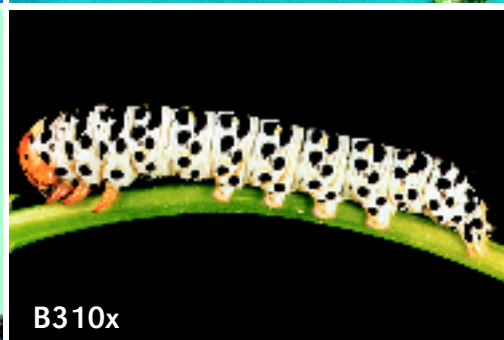
B309x



B309x'



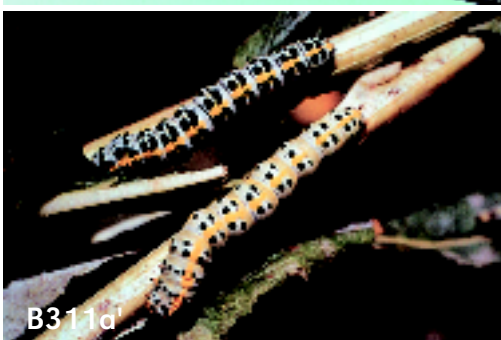
B310



B310x



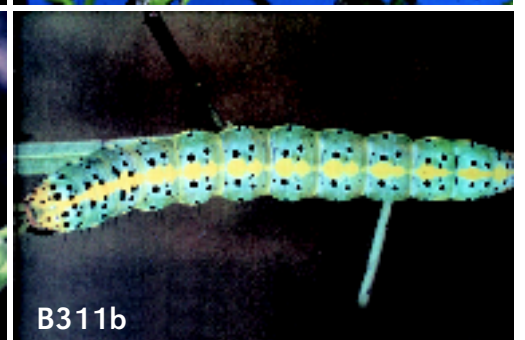
B311α



B311α'



B311α''



B311b