

Tafel 47

B439 *Phlogophora meticulosa* (LINNAEUS, 1758)

B439: leg., det., fot. BECK, 1991/1992: D – Rh-Pf – Mainz.

B439': leg., fot. NIPPE, ohne Daten.

B439'': leg., det., fot. BECK, 1991/1992: D – Rh-Pf – Mainz.

B440 *Habrynthis scita* (HÜBNER, 1790)

B440: leg., fot. BODI, ohne Daten.

B440': bräunl Form, leg. HORVATH, fot. NIPPE: D – Ba-Wü – Schwäb. Alb.

B441 *Euplexia lucipara* (LINNAEUS, 1758)

B441: leg., fot. BODI, viii. 1978, det. BECK: D – S-H Buxtehude – Grünendeich.

B441': leg., fot. AHOLA, viii. 1985: FIN – Hämeenkoski – HL.

B442 *Thalpophila (Thalpophila) matura* (HUFNAGEL, 1766)

B442: leg., ex ovo BECK, fot. BODI, 1972/73: D – Bay – Rhön – vic Ostheim.

B443 *Thalpophila (Thalpophila) vitalba* (FREYER, 1834)

B443: leg., ex ovo, fot. BODI, 1981: E – Kat – Gerona – Vidreras – Puig Ventós.

B444 *Thalpophila (Chlorothalpa) xanthochloris* BOISDUVAL, 1840)

B444: leg. KOSCHWITZ, ex ovo HEUBERGER, fot. BODI, i. 1982: E – Teruel – Albarracin.

B444x *Thalpophila (Subthalpa) subsericata bobitsi* BECK, 1999

B444x: leg. DRECHSEL & PETERSEN, ex ovo, fot. BECK, x.–xii. 1996: Tü – Azigöl – Bozkurt.

B444x': LL-Raupe, leg. DRECHSEL & PETERSEN, ex ovo, fot. BECK, x.–xii. 1996: Tü – Azigöl – Bozkurt.

B444x'': L2-Larve (unscharf), leg. DRECHSEL & PETERSEN, ex ovo, fot. BECK, x.–xii. 1996: Tü – Azigöl – Bozkurt.

B445 *Polyphaenis sericata* (ESPER, [1787])

B445: leg., ex ovo, fot. BODI, 1985: E – Kat – Gerona – Vidreras – Puig Ventós.

B445': VL-Stadium, leg., ex ovo JÜNGLING, fot. BECK, 1994/95: CH – VS – Raron.

B445'': L3-Stadium, leg., ex ovo JÜNGLING, fot. BECK, 1994/95: CH – VS – Raron.

B446 *Hyppa rectilinea* (ESPER, [1788])

B446: leg., ex ovo, fot. BODI, x. 1971: I – S-Tirol – Vinschgau Staben.

B446': jüngere LL-Raupe, Do-Ansicht, leg., ex ovo AHOLA, fot. BECK, 1981: FIN – Hämeenkoski – HL.



B439



B439'



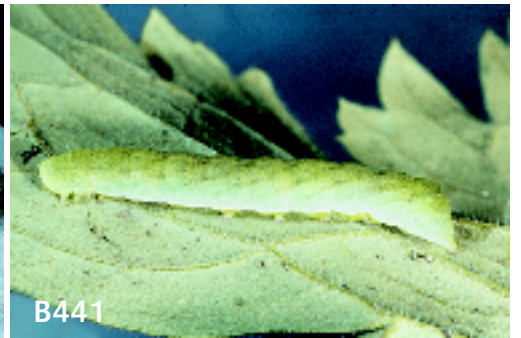
B439''



B440



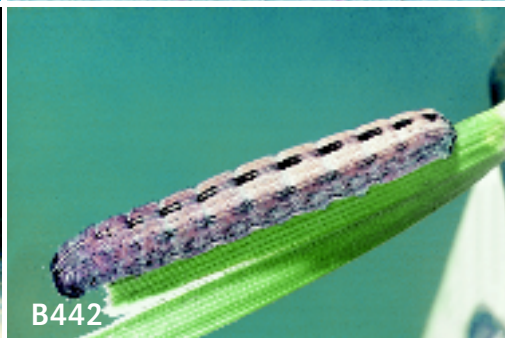
B440'



B441



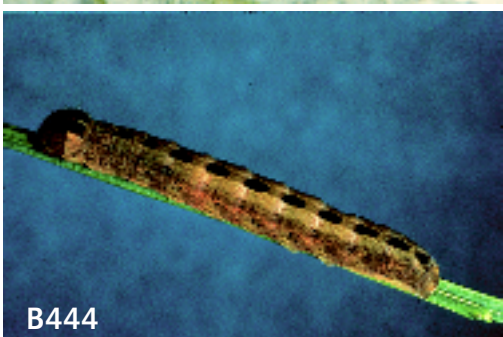
B441'



B442



B443



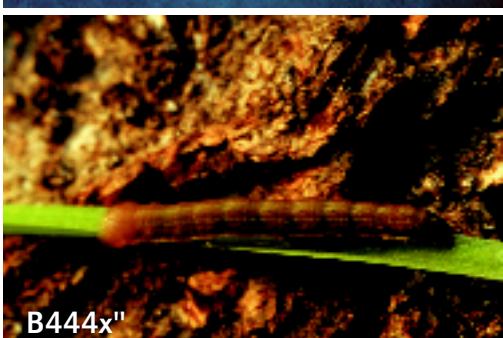
B444



B444x



B444x'



B444x''



B445



B445'



B445''



B446



B446'